



**#R284-2**

FORGED IRON TWO LIGHT  
WALL LAMP WITH HANDMADE  
STEEL BACKPLATE

SHOWN WITH OPTIONAL  
ANTIQUÉ WAX CANDLE  
FINISH SHOWN: PUEBLO

HT. 15 1/2"  
W. 10 1/2"  
PROJ. 4 1/2"

MAXIMUM WATTAGE: 120  
CANDELABRA BASE SOCKETS

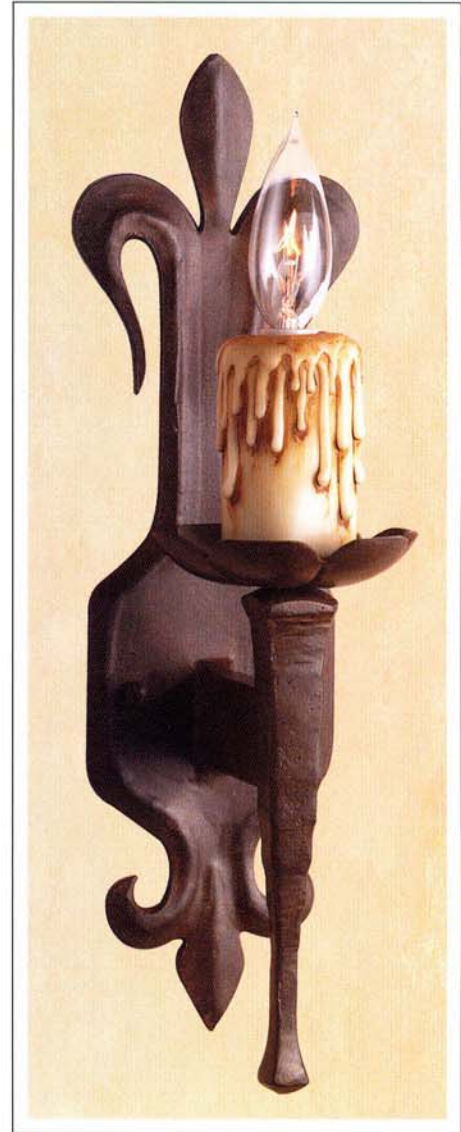
**#R284-1**

FORGED IRON SINGLE LIGHT WALL LAMP  
WITH HANDMADE STEEL BACKPLATE  
AND BOBESCHE

SHOWN WITH OPTIONAL  
ANTIQUÉ WAX CANDLE  
FINISH SHOWN: PUEBLO

HT. 15 1/2"  
W. 5"  
PROJ. 6 1/2"

MAXIMUM WATTAGE: 60  
CANDELABRA BASE SOCKET



*Dana  
Creath  
Designs*

COSTA MESA, CALIFORNIA  
COPYRIGHT © 2002 ALL RIGHTS RESERVED  
DANA CREATH DESIGNS